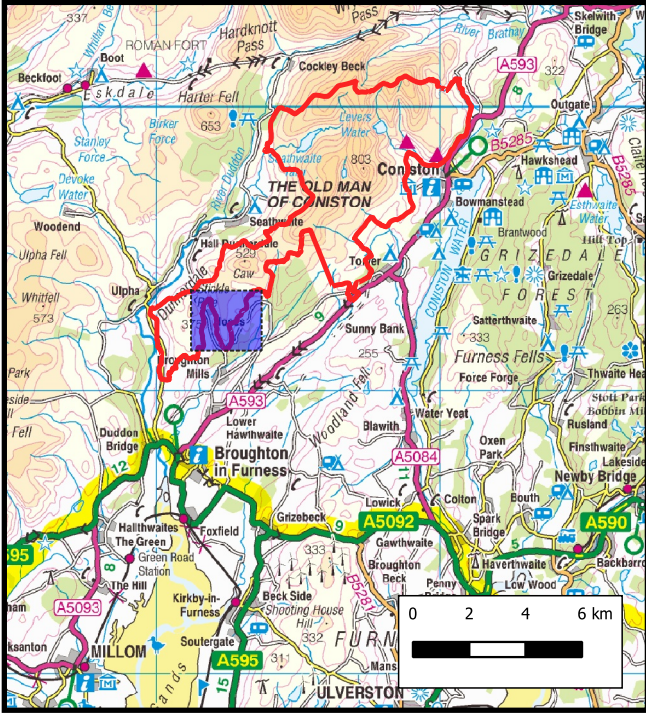
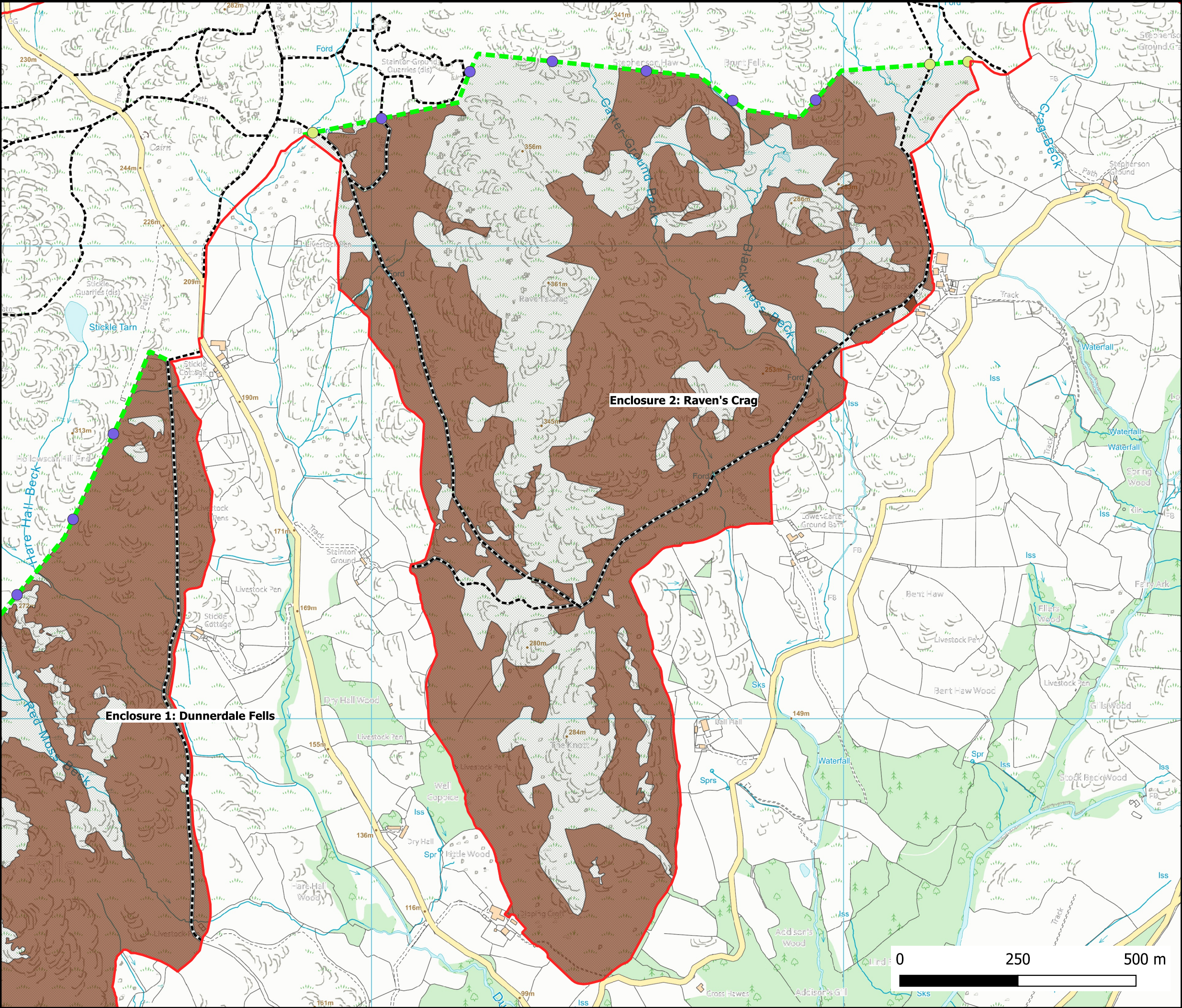


Map showing area of Dunnerdale, Seathwaite & Torver Common: Raven's Crag - Country Side Stewardship Proposals.



**Legend**

- DSTC boundary
- Neighbouring common land parcels
- DSTC Scheduled Monuments
- Public Right of Way
- Proposed CSS fence line

Proposed tree planting with buffer

- 25
- 325
- Proposed CSS scrub regeneration

New access points

- Bridleway - 4' gate
- Footpath - 3' gate
- Causal tracks & general access - Stile



Cumbria Wildlife Trust

Map produced under license held by Cumbria Wildlife Trust 2019  
© Crown Copyright 2005. All rights reserved. Ordnance Survey Licence number 100044280  
© Crown Copyright. All rights reserved. Cumbria County Council. 100019596. 2004  
Map produced: 15-April-2020 17:22