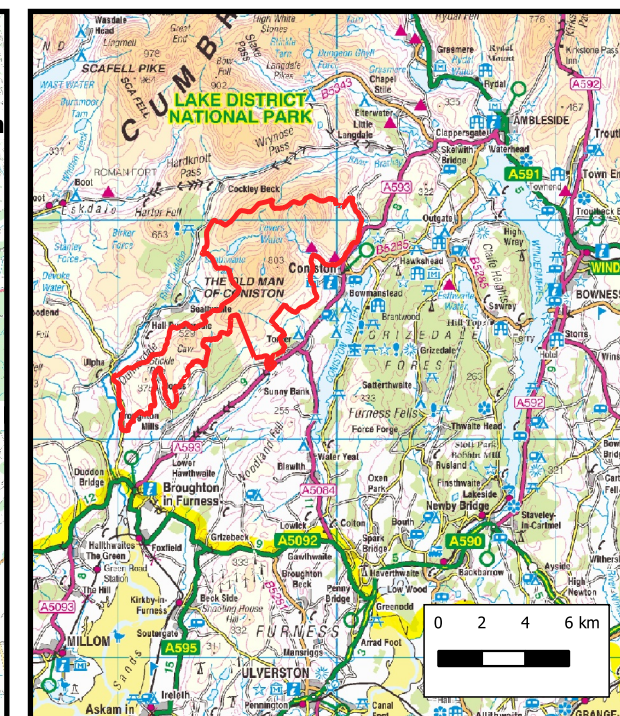
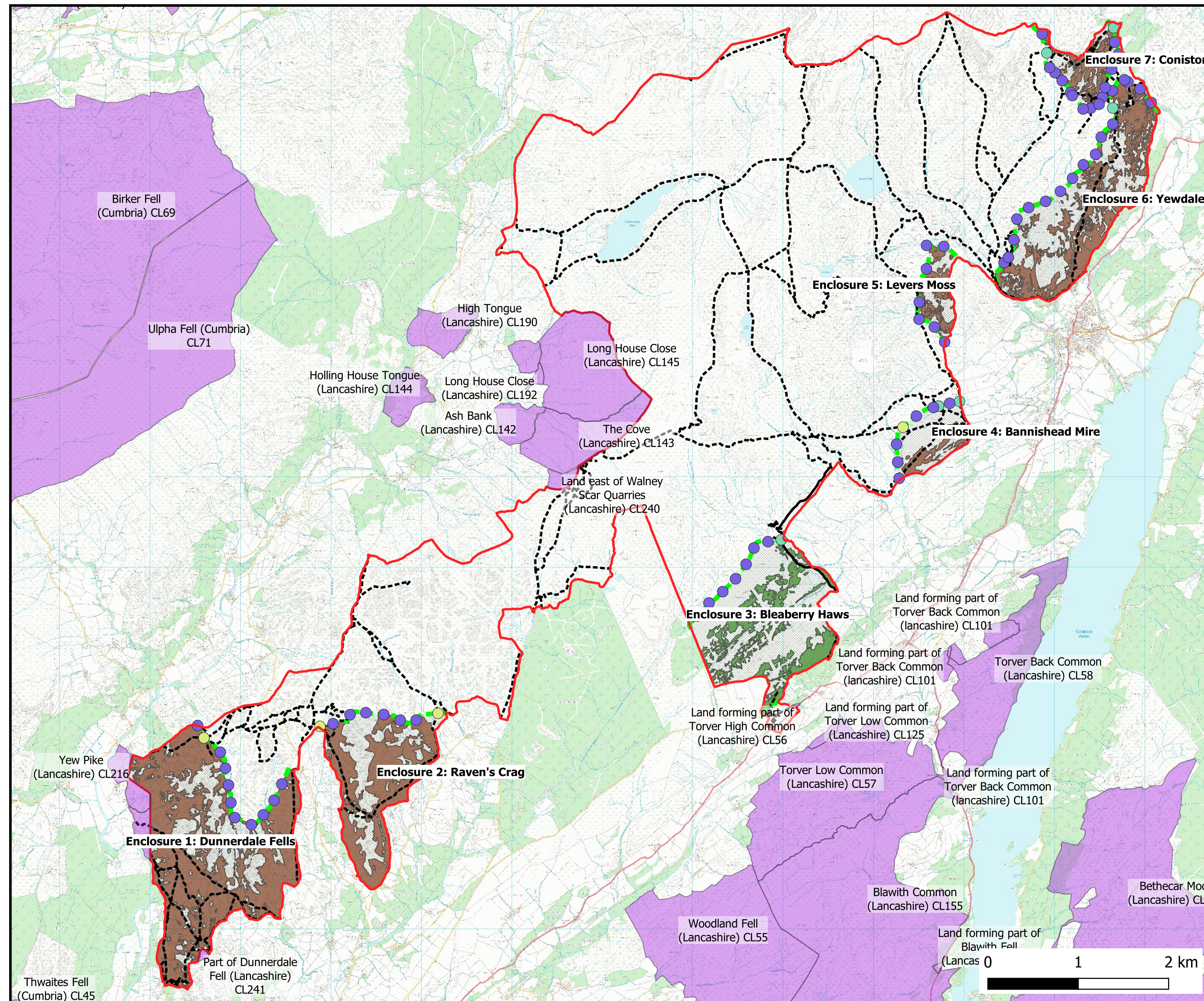


Map showing Dunnerdale, Seathwaite and Torver Common land - Country Side Stewardship Proposals.



Legend

- DSTC boundary
- Neighbouring common land parcels
- DSTC Scheduled Monuments
- Public Right of Way
- Proposed CSS fence line
- Proposed CSS scrub regeneration
- Proposed tree planting with buffer
- 25 per Ha
- 325 per Ha
- New access points
- Bridleway - 4' gate
- Footpath - 3' gate
- Causal tracks & general access - Stile

Map produced under license held by Cumbria Wildlife Trust 2019
 © Crown Copyright 2005. All rights reserved.
 Ordnance Survey Licence number 100044280
 © Crown Copyright. All rights reserved. Cumbria County Council. 100019596. 2004
 Map produced: 14-April-2020 10:28