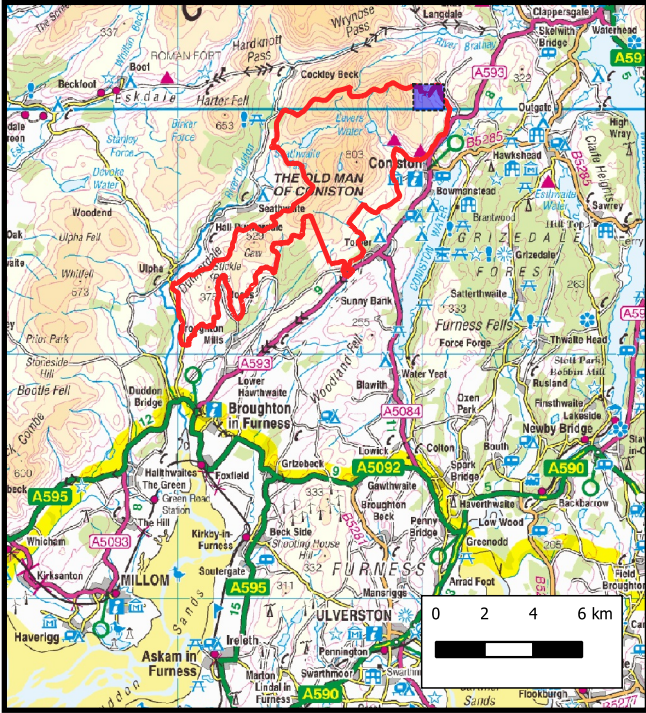
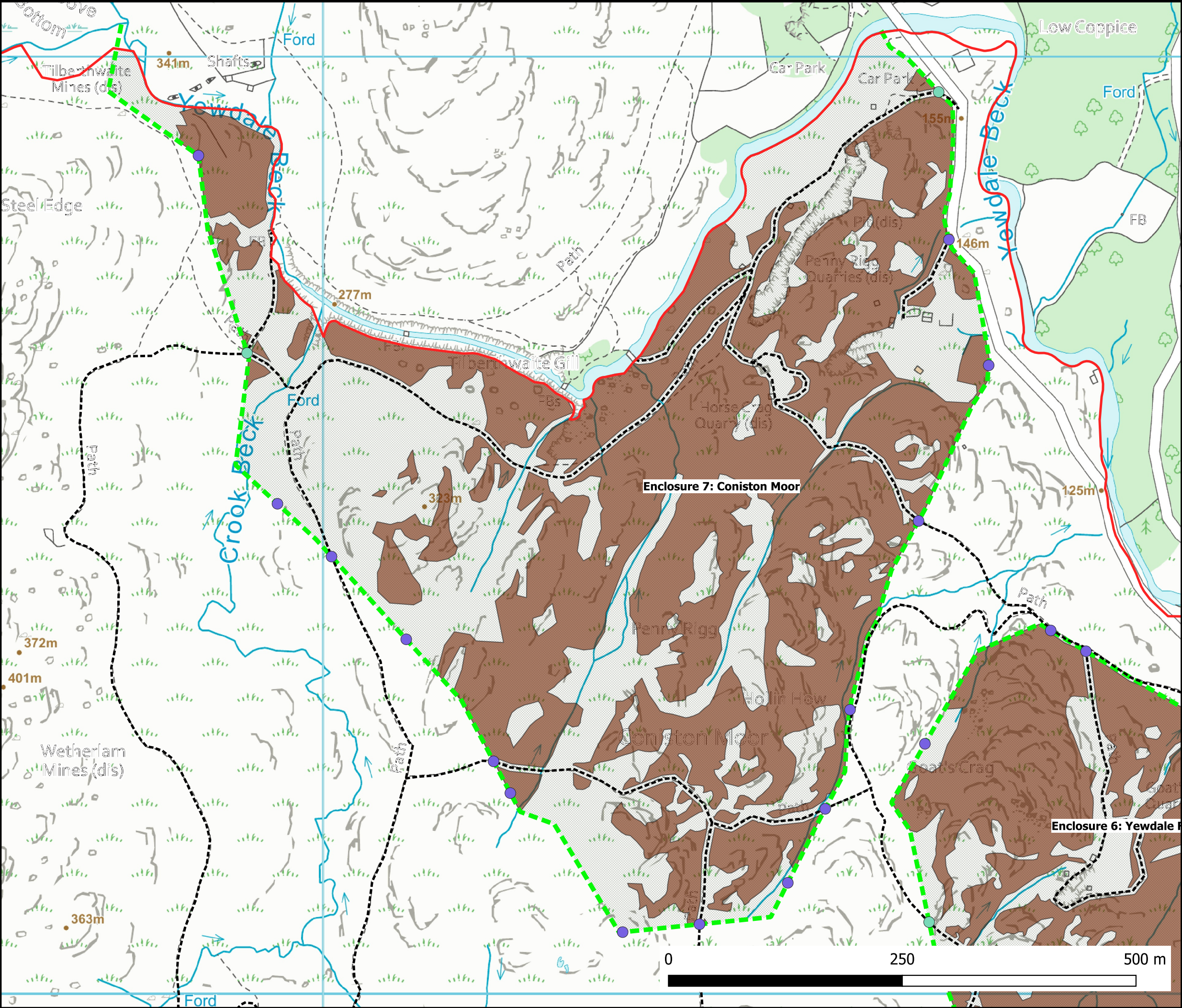


Map showing area of Dunnerdale, Seathwaite & Torver Common: Coniston Moor - Country Side Stewardship Proposals.



Legend

- DSTC boundary
- Neighbouring common land parcels
- DSTC Scheduled Monuments
- Public rights of way
- Public Right of Way
- Proposed CSS fence line
- Proposed CSS scrub regeneration
- Proposed tree planting with buffer
 - 25 per Ha
 - 325 per Ha
- New access points
 - Bridleway - 4' gate
 - Footpath - 3' gate
 - Causal tracks & general access - Stile



Cumbria
Wildlife Trust

Map produced under license held by
Cumbria Wildlife Trust 2019
© Crown Copyright 2005. All rights
reserved. Ordnance Survey Licence
number 100044280
© Crown Copyright. All rights
reserved. Cumbria County Council.
100019596. 2004
Map produced: 14-April-2020 10:28