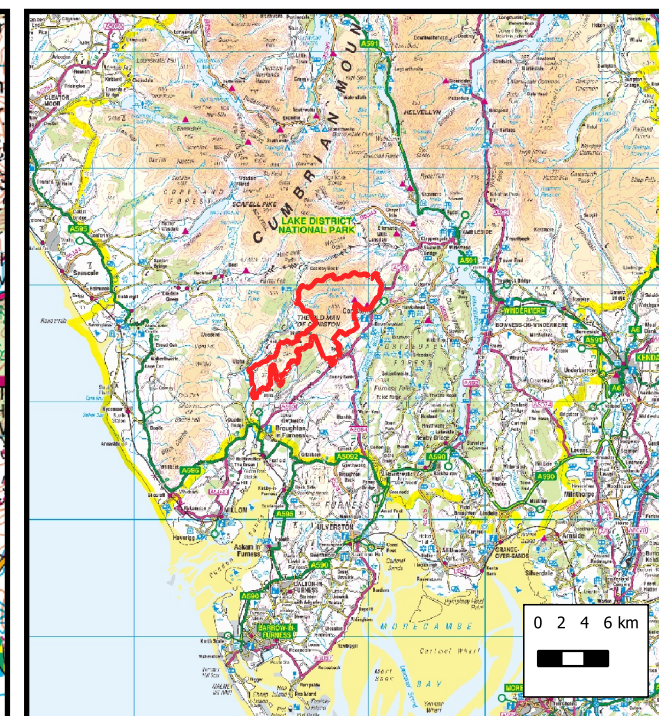
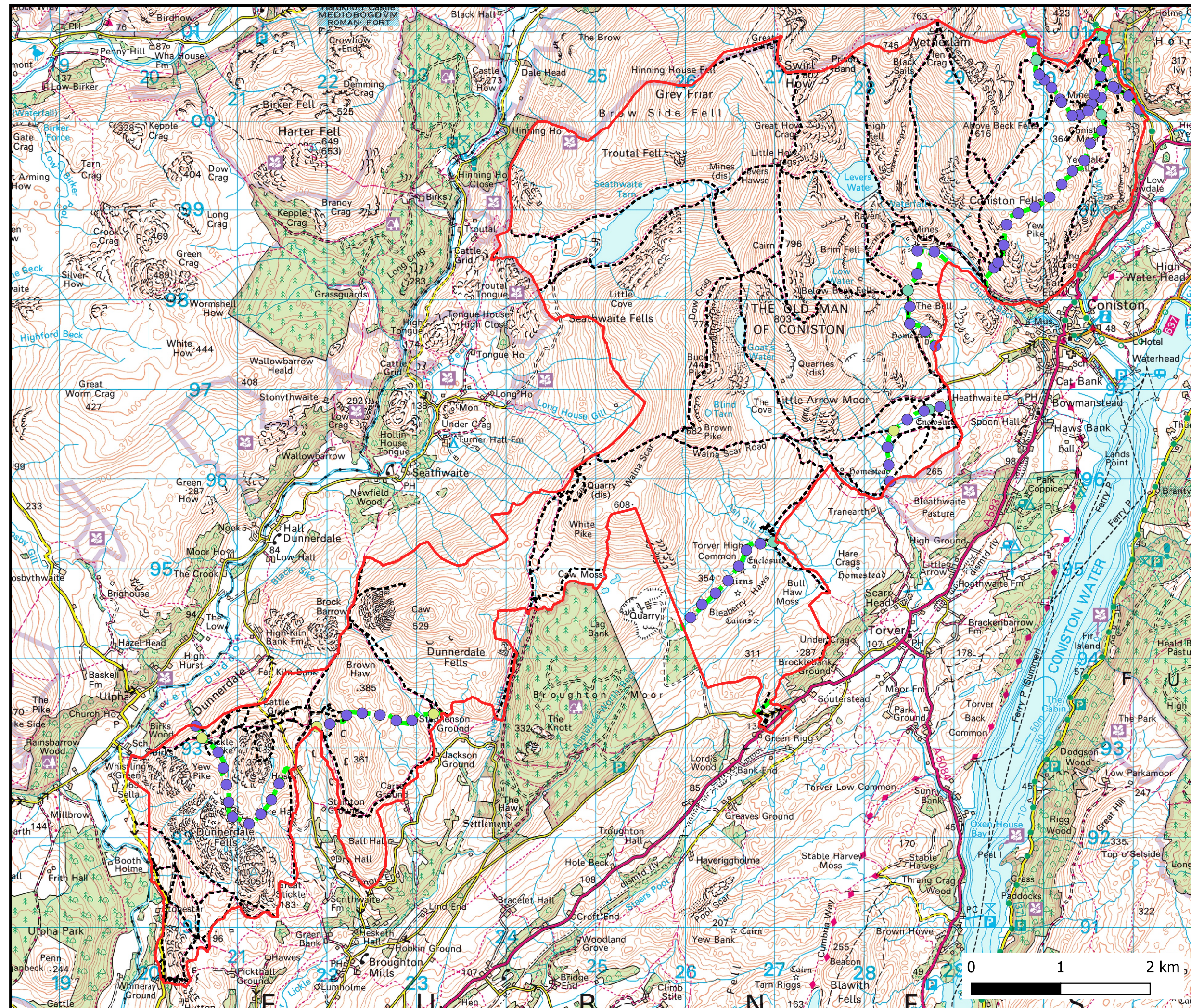


Map showing access routes crossing Dunnerdale, Seathwaite and Torver Common land



Legend

- DSTC boundary
- Public Right of Way
- Proposed CSS fence line
- New access points
 - Bridleway - 4' gate
 - Footpath - 3' gate
 - Causal tracks & general access - Stile



Cumbria
Wildlife Trust

Map produced under license held by
Cumbria Wildlife Trust 2019
© Crown Copyright 2005. All rights
reserved. Ordnance Survey Licence
number 100044280
© Crown Copyright. All rights
reserved. Cumbria County Council.
100019596. 2004
Map produced: 14-April-2020 10:23