

Argill Woods Special Invertebrate Site

Habitats

Shaded woodland with deadwood

Argill Woods, managed by Cumbria Wildlife Trust, features a number of ancient and veteran trees, including ash, oak and rowan. Good examples of standing and fallen deadwood can be found. Hazel coppice with a flower-rich understory also features on the site. This provides egg laying habitat, shelter and structure, as well as a number of different food plants.



Running water and woody debris

The Argill Beck runs through the site, with good areas of woody debris, riffles and pools to support riverflies and water beetles. Wet flushes, including tufa forming examples, are also found here.

Flower-rich meadows

Large stands of knapweed, devil's-bit scabious and melancholy thistle occur in a string of meadows through the site, supporting late summer pollinators. Hogweed, wild garlic and betony are found within the woodland, providing for spring to summer pollinators.

Species

Flowerly clearings attract dark-saddled Leucozona hoverfly (pictured), the late bear hoverfly bumblebee mimic, and violet oil beetles.



Red-headed cardinal beetles (pictured), leopard slugs, blunt-tailed snake millipedes and crane fly, *Limonia nubeculosa*, are found in the woodland.



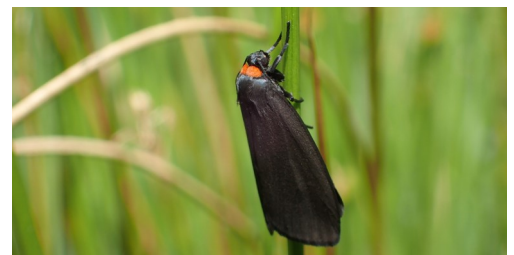
Meadows are habitat to click beetle, *Ctenicera pectinicornis*, blue soldier beetles and the lesser hornet hoverfly (pictured).



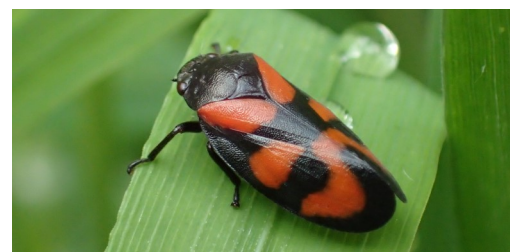
Running water supports larvae of crane fly, *Tipula maxima* (pictured). Common hawkers hunt riverflies over the beck.



Old trees are used by the localised buff-tailed bear hoverfly, and red-necked footman moths (pictured).

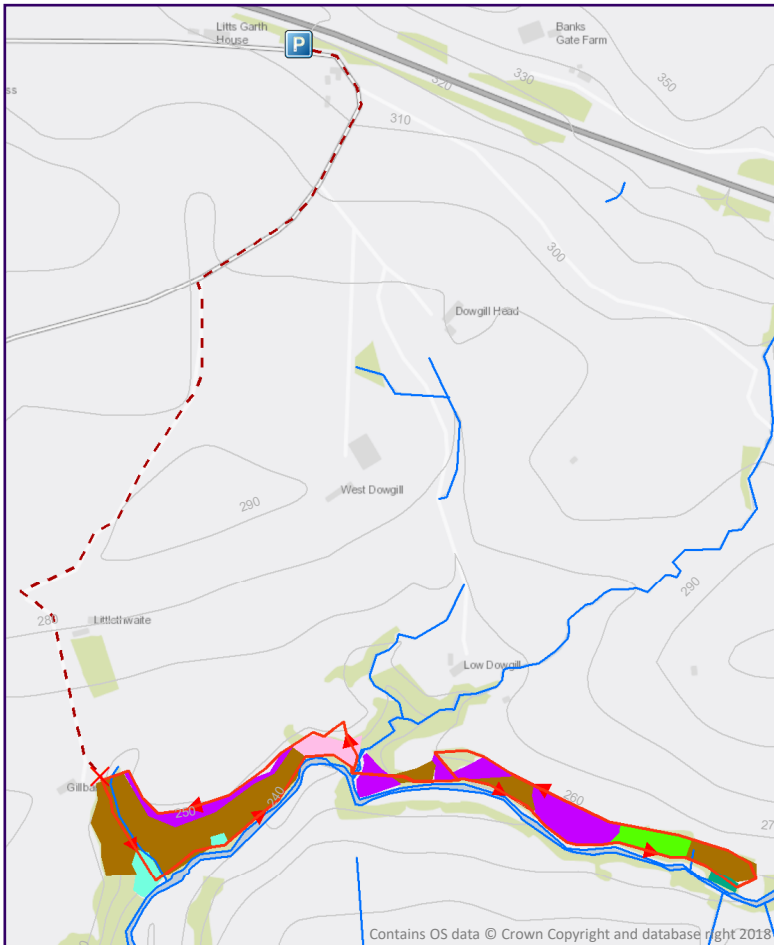


Birch shieldbugs, grass bug, *Leptopterna dolabrata*, green leafhoppers and red-and-black froghoppers (pictured) live here.



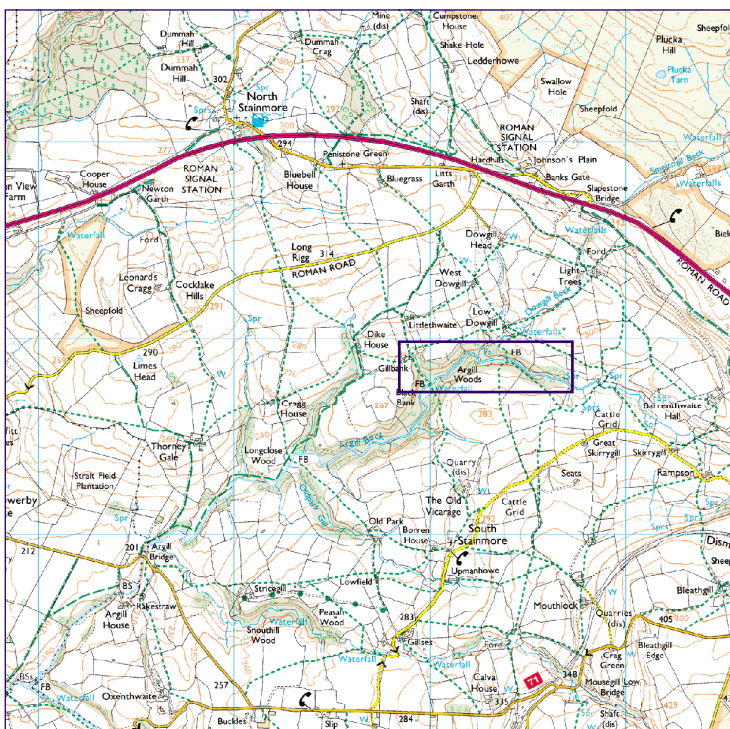
Argill Woods invertebrate survey route

Car parking: lay-by, old A66, Stainmore, Cumbria, CA17 4DY; GR: NY 84185 14872



Key habitats and features

- Parking
- Directions to survey route
- Start and end point
- Survey route
- Running water
- Damp grassland
- Flower-rich grassland
- Hazel coppice
- River shingle
- Wet woodland
- Woodland with deadwood



Terrain: the directions to survey route follows a small road and farm track with occasional slow moving traffic. The survey route is on an uneven footpath with a number of steep, slippery and narrow sections, steps, stiles and occasional grazing animals. Care needs to be taken on the footpaths in the woods, especially during wet and muddy periods.

Survey route length: 1.5 miles

For more information on Argill Woods Nature Reserve, visit: <https://www.cumbriawildlifetrust.org.uk/nature-reserves/argill-woods>